

## High-Resolution Inkjet Printer

# DJ240

The latest, smartest and most functional designs of Piezo Inkjet printers for secondary packaging lines.



Functional, reliable and robust.

Multiple Piezo impulse print head controlled printing.

Automatic ink system design with quick prime,  
ink drainage and self-cleaning print head  
nozzle for 100% mess-free printing.

CE compliant.

## Key Feature

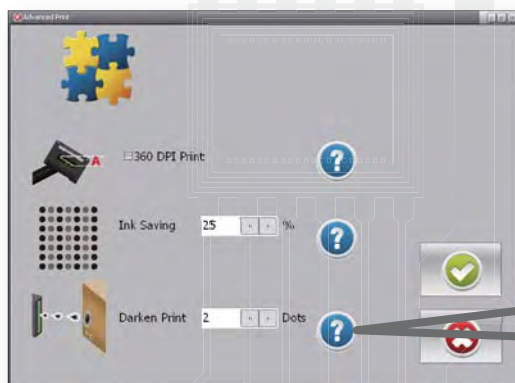
**01** Large 12" Touchscreen for easy operator interface



**02** Windows Operating Software provides multi-lingual interface for operator.

**03** Large Icons simplify message creation and printer control with touch screen.  
Virtual display of Ink Usage

**04** User friendly software enables users with minimal training to operate system



**05** Two level password protection

**06** Cost per print and ink consumption per message included in software

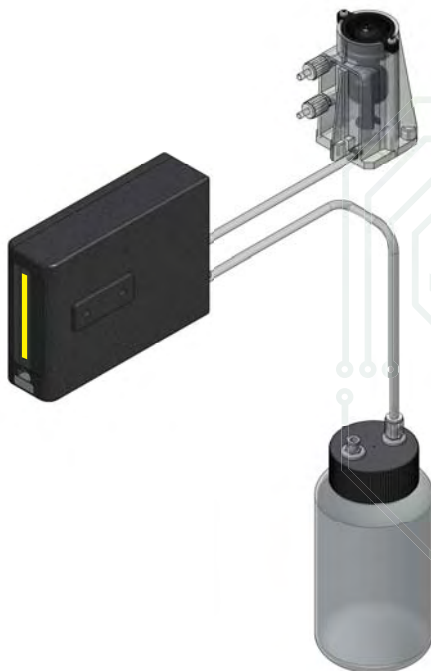
**07** Clear display for quick and easy print set-up.



**08** Automatic ink system design with quick prime, ink drainage and self-cleaning print head nozzle for 100% mess-free printing.



**09** Bulk ink delivery system provides a good solution for higher ink consumption.



**10** Print head automatically purges during each print break.

**11** Automatically clean print head nozzle, minimize your maintenance.

**12** Security chip built into the ink cartridge to prevent incorrect ink usage.



**13** Designed for Oil based, Solvent based and UV cured inks (with separate curing lamp)

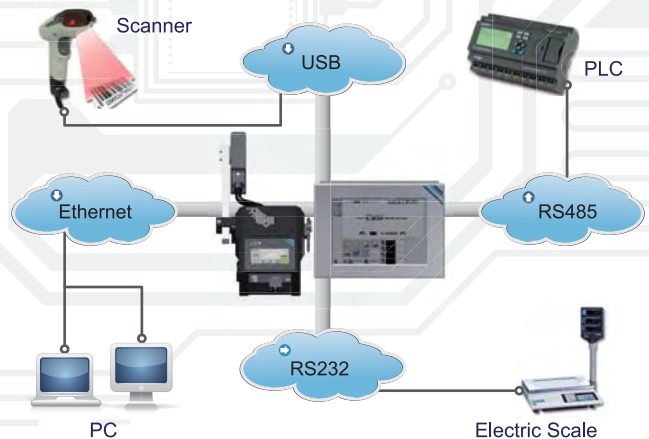
**14** Flexible installation includes floor stand, conveyor and swing-arm.

**15** Spreadsheet database printing.

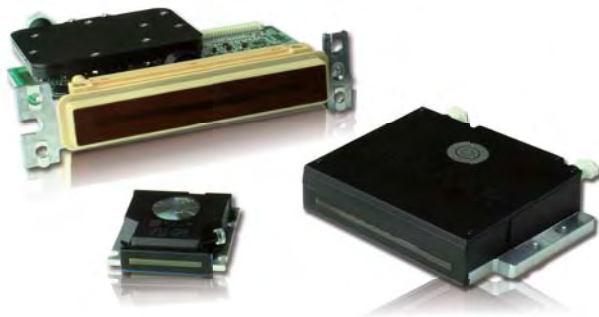


**16** Remote printer control and monitor via Wi-Fi.

**17** External data connectivity printing.



**18** Flexible construction, one controller can control 4 X print heads (combination of 17.5mm, 54mm and 70mm).



**19** Barcode shaving function ensures barcodes are easy to read and scan.



Operating Temperature Range	5°C ~45°C (41°F - 113°F)
Power Supply	AC 100V - 240V, 50/60Hz, 1.6A, auto-switching
Display	Controller : 12" full color LCD touch screen display Print Head System : 4.3" color LCM module (Touch Screen) Alphanumeric of full true type fonts Scalable text; rotation, mirror and inverse printing Automatic time and date functions Automatic best-before date calculation Automatic incrementing & decrementing batch counting and Lot-Box code
Print Capability	Auto repeat printing Graphic format supported using 1 bit bitmap file (*.bmp) 16 programming shift codes with automatic rollover GS1 barcodes / 2D codes External data connectivity print Data base print
External Data Communication Interface	RS232, RS485 and Ethernet
Maximum Print Height	17.5mm for HX 128 head 54 mm for HX 384 head 70 mm for HS 500 head
Print Lines	Multiple lines depending upon the print character size
Message Length	Maximum to 1.024mm
Vertical Print Resolution	185 dpi
Horizontal Print Resolution	200 dpi
Built-in Message Storage Capacity	4GB SDD available for message storage, actual message size will vary based on content
Print Speed (Conveyor)	Up to 98 feet/min(30m/minute) at 300dpi with 128 80pl print head Up to 197 feet/min(60m/minute) at 300dpi with 128 40pl print head Up to 164 feet/min(50m/minute) at 300dpi with 382 60pl print head Up to 98 feet/min(30m/minute) at 300dpi with 510 80pl print head
Ink Supply	250ml ink cartridge (standard), 500ml ink cartridge (optional)



## Specification

Length of Data Line	Controller to print head control system : 5m(Maximum)
	Print head control system to print head : 80cm(Maximum)
Dimension (L/W/H)	Controller : 34 x 26 x 7.6 (cm) / 13.4 x 10.2 x 3 (inches)
	Print head system : 16 x 45 x 14 (cm) / 6.3 x 17.7 x 5.5 (inches)
Weight	Controller : 5.8 kg (12.8 lb)
	Print head system : 4.2 kg (9.3 lb) - excluding cartridge and bracket
Installation	Side & downside printing bracket
Distance to Print Surface	Maximum 6.5mm (0.25 inches)

## Optional Accessories



### Encoder

For operation with variable speed conveyors.



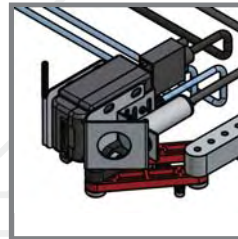
### UV Curing System

Ink curing to instant by ink.



### External Light Beacon

Indicates low ink levels.



### Swing-Arm

For help maintain distance between print head and product to be perfectly printed.

Specification & Optional Accessories



HSAUSA LLC 150 William Street, Perth Amboy, NJ 08861

Tel: 732-324-0800 sales@hsausa.com [www.hsausa.com](http://www.hsausa.com)