

HSAJET® Printheads

HP TIJ 2.5

The HSAJET® printheads are based on HP Thermal inkjet technology TIJ 2.5

HSAJET® and HP TIJ 2.5 technology

The HSAJET® printers use HP thermal inkjet technology TIJ 2.5, providing high-resolution printing up to 600 dpi for sharp text, crisp barcodes and intense spot colours.

Versatile and affordable, HP's advanced inkjet technology powers a wide range of industrial and commercial printing applications - from simple text documents to vivid, complex print jobs on many types and sizes of media.

HSAJET® printheads

The HSAJET® printheads are available in three different versions: Top - Side - Side/low

The physical dimensions of each version along with cable connector directions provide advantages to each printhead. This facilitates the installation.

The robust stainless steel design meets the demands for production environments.

HSAJET® F-type printheads

Every stall in our new printheads has a switch. This has been added to avoid damage to the printhead if the ink cartridge is being taken out of the stall during print mode. If a cartridge is taken out, the power to the printhead is cut off.

All our new controllers use the F-type printheads.



HP key-features

- Cost-effective: No warm-up cycle and no down time
- Easy to use: No special training required to operate and maintain thermal inkjet printers
- Fast: Hundreds of tiny nozzles firing at high frequency allow high-quality printing at high speeds
- Reliable: TIJ is less sensitive to air bubbles in the firing chamber than other printing technologies, avoiding print quality problems and delays caused by trapped air
- Flexible: Supports a wide variety of media
- High quality: TIJ places smaller drops more accurately, producing consistently superb image and text quality
- Environmentally safe: With thermal inkjet, there is no need for service technicians qualified to handle volatile solvents, and no noxious fumes
- Lower cost of ownership: A thermal inkjet printer can cost much less than other printing equipment, reducing the market entry cost



Technical Details

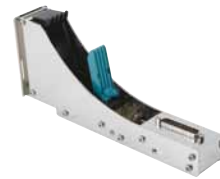
F-TYPE PRINTHEADS CONFIGURATIONS

TOP/DOWN

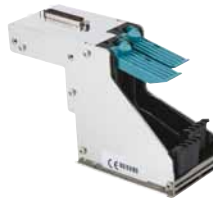
SIDE

SIDE/LOW

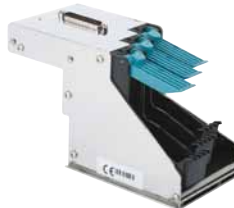
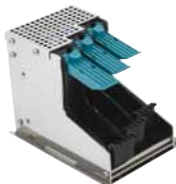
1-PEN



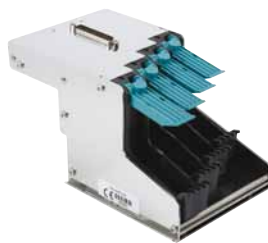
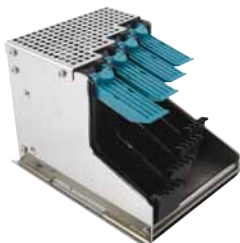
2-PEN



3-PEN

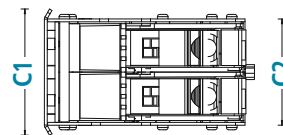
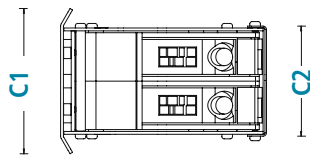
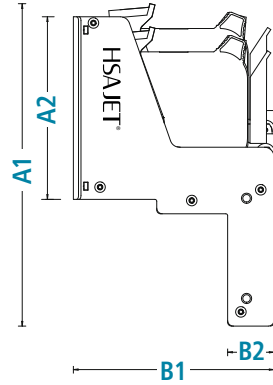
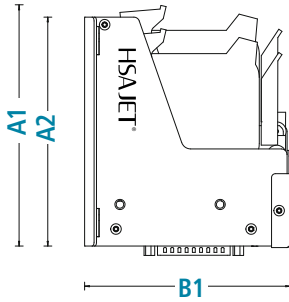


4-PEN



Technical Details

F-TYPE PRINTHEADS DIMENSIONS

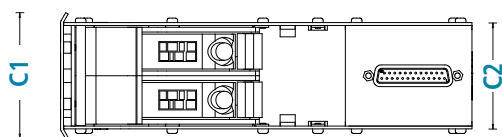
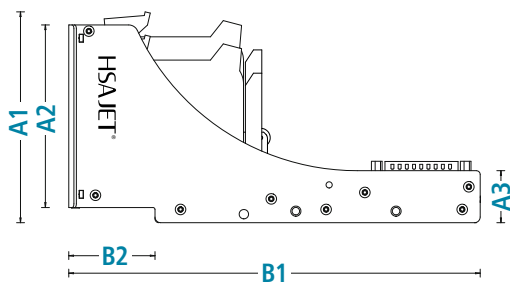


TOP/DOWN

| Dimensions in mm (inches) | A1 | A2 | B1 | C1 | C2 |
|---------------------------|------------|------------|------------|------------|------------|
| 1-PEN | 115 (4.51) | 108 (4.24) | 106 (4.18) | 43 (1.68) | 32 (1.26) |
| 2-PEN | 128 (5.04) | 121 (4.77) | 109 (4.29) | 77 (3.02) | 58 (2.29) |
| 3-PEN | 140 (5.52) | 133 (5.24) | 109 (4.29) | 102 (4.03) | 84 (3.30) |
| 4-PEN | 152 (6.0) | 146 (5.73) | 109 (4.29) | 128 (5.05) | 109 (4.31) |

SIDE

| Dimensions in mm (inches) | A1 | A2 | B1 | B2 | C1 | C2 |
|---------------------------|------------|------------|------------|-----------|------------|------------|
| 1-PEN | 158 (6.23) | 84 (3.32) | 106 (4.18) | 25 (0.97) | 45 (1.76) | 32 (1.26) |
| 2-PEN | 171 (6.71) | 97 (3.80) | 106 (4.18) | 25 (0.97) | 67 (2.63) | 56 (2.21) |
| 3-PEN | 183 (7.20) | 109 (4.29) | 106 (4.18) | 25 (0.97) | 94 (3.68) | 82 (3.22) |
| 4-PEN | 196 (7.70) | 122 (4.79) | 106 (4.18) | 25 (0.97) | 119 (4.69) | 107 (4.23) |



SIDE/LOW

| Dimensions in mm (inches) | A1 | A2 | A3 | B1 | B2 | C1 | C2 |
|---------------------------|------------|------------|-----------|------------|-----------|------------|------------|
| 1-PEN | 99 (3.91) | 84 (3.32) | 28 (1.08) | 218 (8.57) | 46 (1.80) | 45 (1.76) | 32 (1.26) |
| 2-PEN | 112 (4.39) | 97 (3.80) | 28 (1.08) | 218 (8.57) | 46 (1.80) | 67 (2.63) | 56 (2.21) |
| 3-PEN | 124 (4.87) | 109 (4.29) | 28 (1.08) | 218 (8.57) | 46 (1.80) | 94 (3.68) | 82 (3.22) |
| 4-PEN | 136 (5.36) | 122 (4.79) | 28 (1.08) | 218 (8.57) | 46 (1.80) | 119 (4.69) | 107 (4.23) |

Technical Details

F-TYPE PRINTHEADS

Technology

HP TII 2.5

Printhead frequency

15 KHz

Print height

12.7-50.8 mm / ½" - 2"

1 to 4 pens

Printhead distance

0.5-2.0 mm

(nozzle to print surface)

Interface

SUB D25

Signals

Switch signal

Complies to

CE directives

Housings

Stainless steel

Environmental conditions

Operating temperature: 10-40° C

Humidity: 10-90%

Non-condensing

Weight

see details below

| Vertical resolution (DPI) | Horizontal resolution 75-2400 DPI (variable)* speed examples (m/min) | | | |
|---------------------------|--|---------|---------|----------|
| | 75 DPI | 300 DPI | 600 DPI | 2400 DPI |
| 600 DPI | 304 | 76 | 38 | 10 |
| 300 DPI high speed | 608 | 152 | 76 | 19 |
| 300 DPI (row A) | 304 | 76 | 38 | 10 |
| 300 DPI (row B) | 304 | 76 | 38 | 10 |

WEIGHT

| in Kg / lbs | Top kg (lbs) | Side kg (lbs) | Side-Low kg (lbs) |
|-------------|--------------|---------------|-------------------|
| 1-pen (½") | 0,37 (0,81) | 0,36 (0,79) | 0,48 (1,05) |
| 2-pen (1") | 0,62 (1,37) | 0,60 (1,32) | 0,73 (1,60) |
| 3-pen (1½") | 0,82 (1,81) | 0,99 (2,02) | 0,91 (2,19) |
| 4-pen (2") | 1,04 (2,30) | 1,07 (2,35) | 1,28 (2,83) |

Accessories:

- Bridges in two standard lengths, special length available on request.
- Printhead mounts (for bridge) for downprint mounting.
- Foot plates/soles for left or right travel.
- HSAJET HP printheads with 1 to 4 pens can be combined and mounted on a common footplate. This enables printheads of 7, 8 or 9 pens.

DISTRIBUTOR:



150 William Street
Perth Amboy, NJ 08861
Toll Free: 1-800-298-8936
Local: 1-732-324-0800
Fax: 1-732-324-4488
sales@hsausa.com
www.hsausa.com